

# Portable and Reusable Frame Solutions

Helping you fight coronavirus and  
keep your community safe



**HUNTER**  
e x p o s i t i o n s

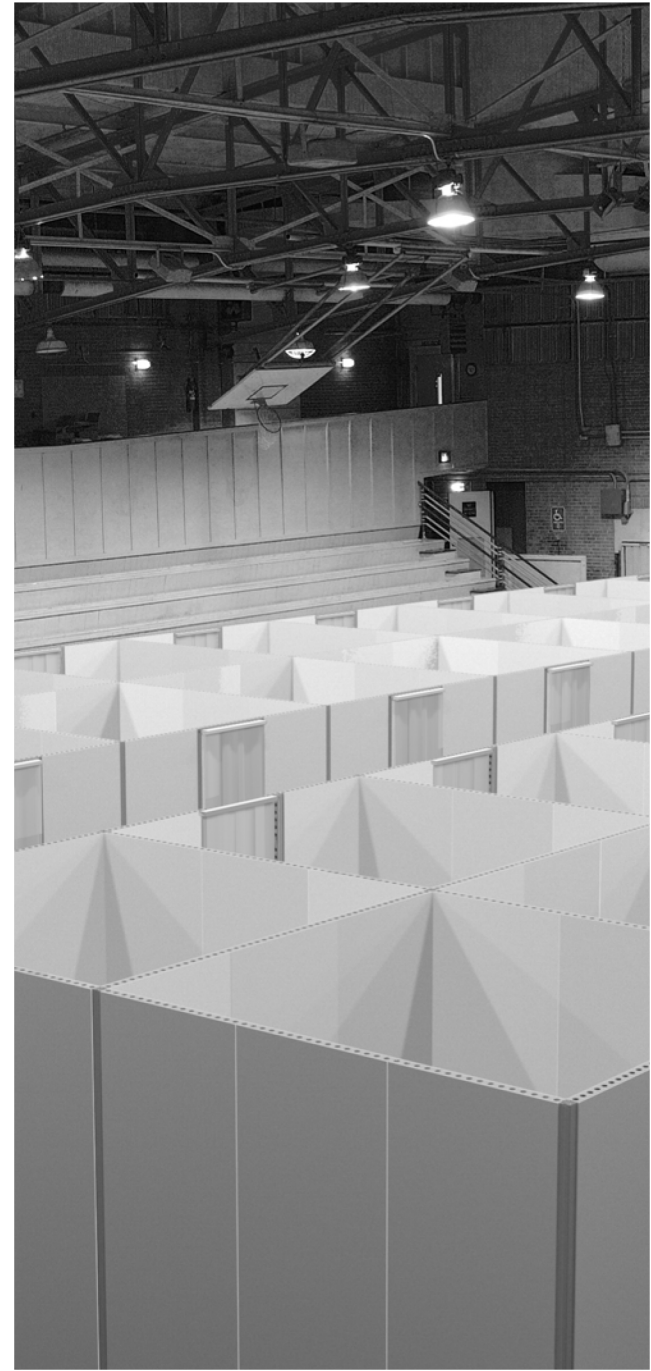
**beMatrix partner in Canada**

101 Avenue Guthrie  
Dorval, QC, H9P 2P1, Canada

**514-683-7230**  
**info@hunterexpositions.com**

- Completely tool-free construction.
- Inventory available nationwide with quick, local delivery.
- Lightweight and constructed in minutes.
- Can be used indoors or outdoors.
- Multiple configuration options.
- Accepts panels of a variety of finishes.
- Frames and hardware can be cleaned and reused for continued use.
- Stackable for hassle-free storage.
- Fast turnaround – days not weeks.
- Local installation available.
- Available for purchase or rental.

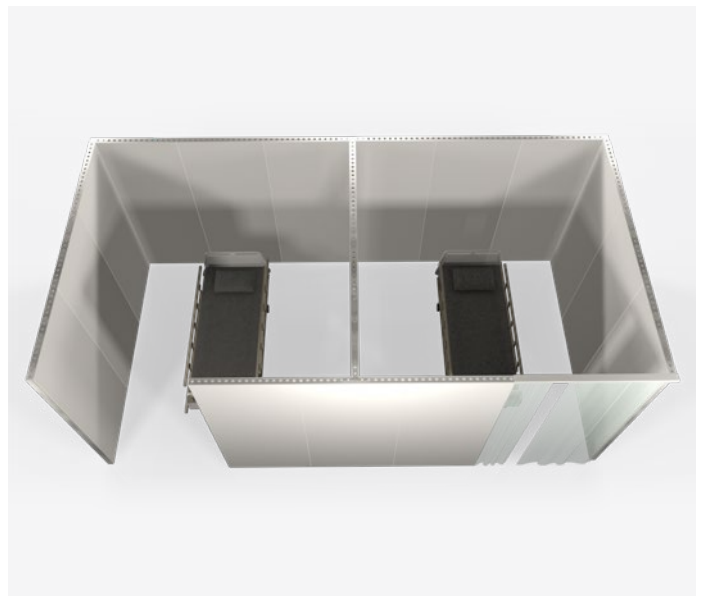
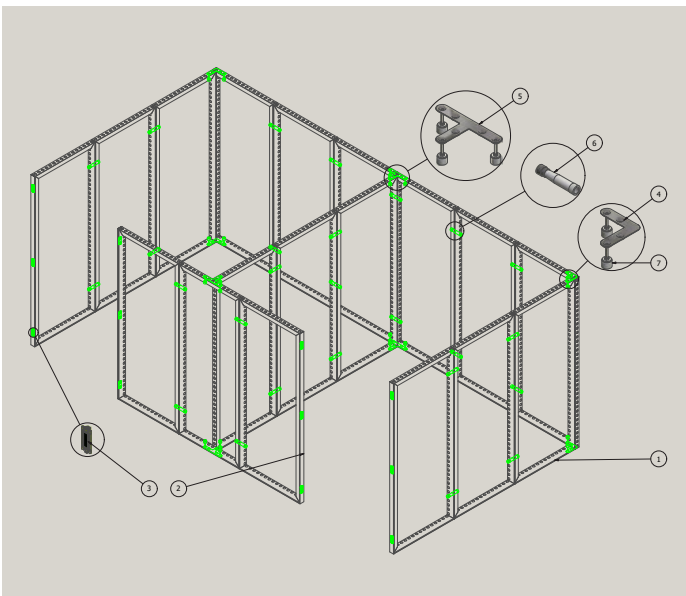
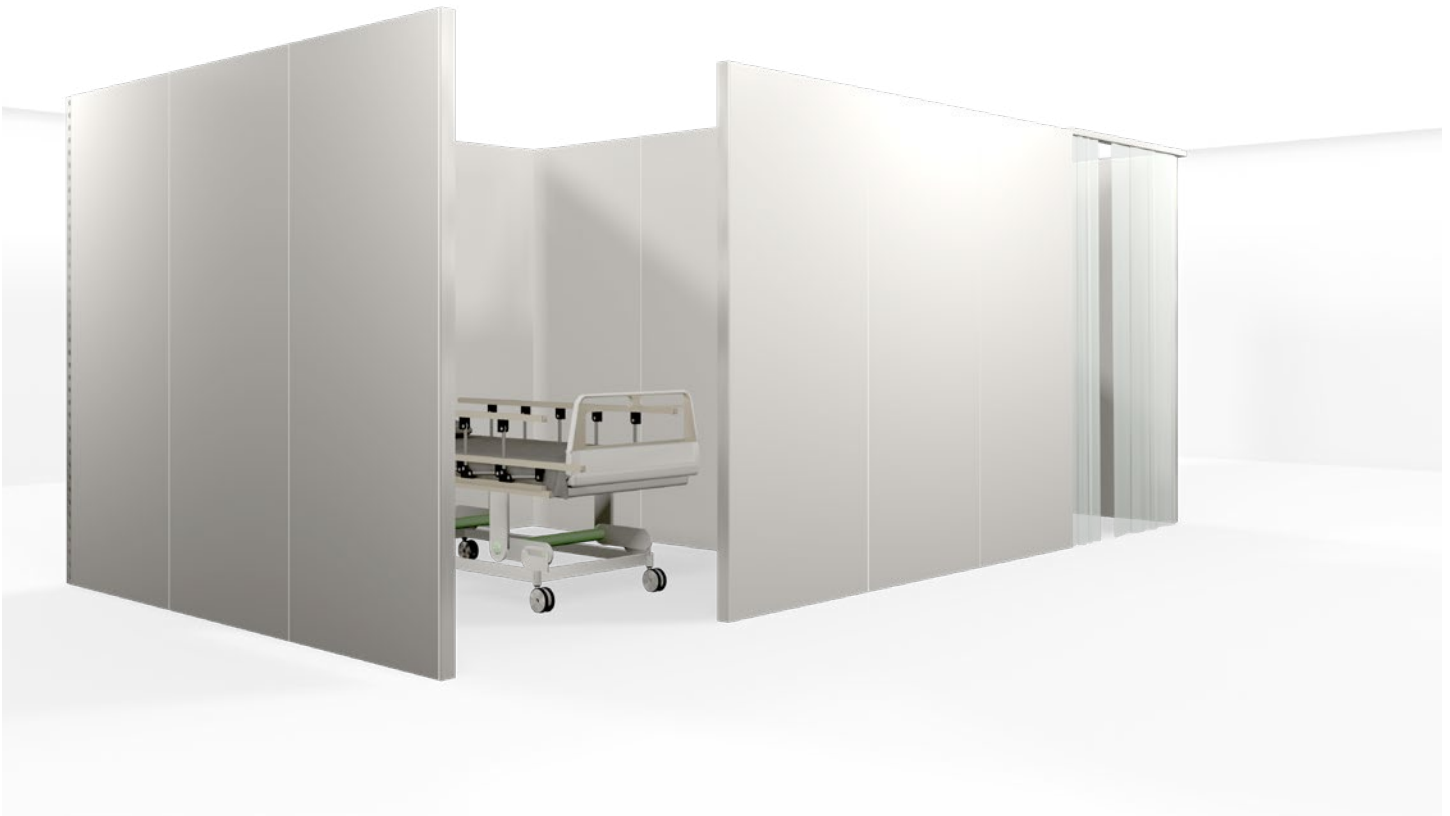
**For more information contact:**



## Modular Care Room

Structure size as shown: 10' x 10'

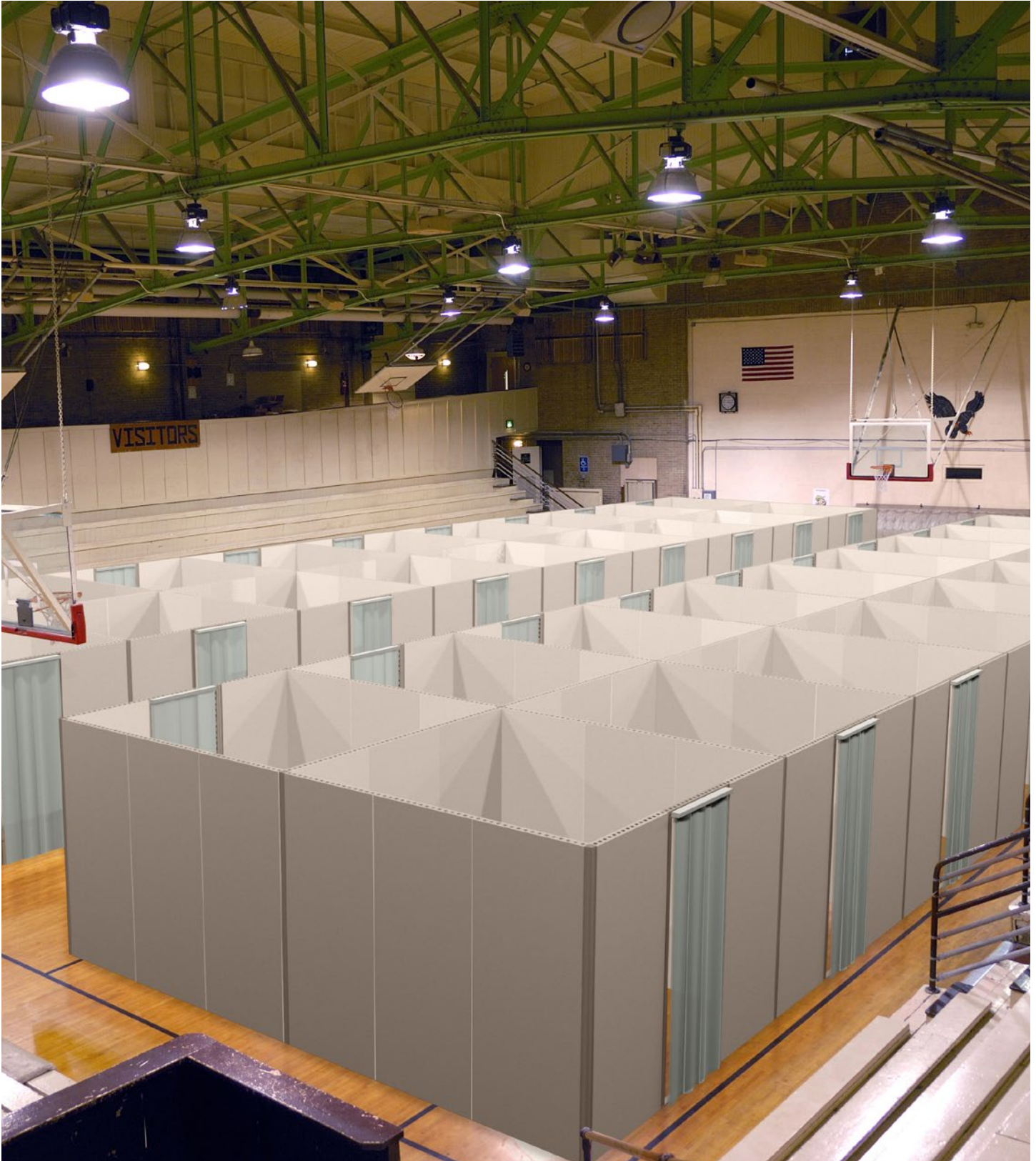
Easy to build and highly customizable, beMatrix® frames set-up in minutes without tools, and can be clad in a variety of finishes which can be easily removed, sanitized, cleaned or discarded.



## Modular Care Room

Structure size as shown: 10' x 10'

beMatrix® frames can be set-up in multiple configuration options and cleaned, allowing for flexibility in design, and continued use.





# Reception Seating

Frames can be used as a divider for seating areas ensuring guests and patients observe social distancing.

