

**SAM  
Light**

New  
technology!



**beMatrix**<sup>®</sup>  
reInventing stand building systems

# SAM Light

**Integrated  
modular  
LED system**

The SAM light is part of the innovative range of beMatrix lighting systems, which can be used for accent as well as general lighting and has been developed especially for use in stand building.

Modular temporary constructions require easy and fast mounting solutions to illuminate all kinds of stands, big or small.



# SAM Light

250 05 50 S

The powerful LEDs – with high luminous flux and available in cold as well as warm colour – are secured in a solid casing with a structured surface.



## 250 05 50 S

SAM LIGHT WARM/COLD

Luminous flux	1200lm
Colour temperature	3500K / 5000K
Power consumption	15W
Length x width x height	430 x 100 x 20 mm
Weight	0,8 kg

IP20 CE 



## SWITCH COLD/WARM LIGHT

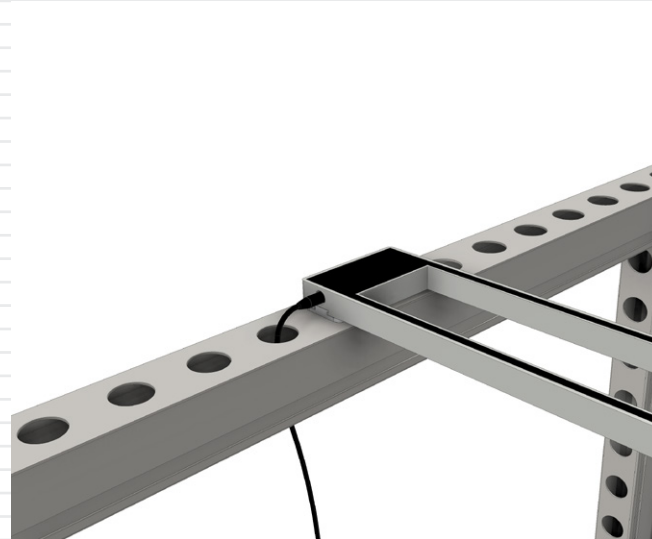
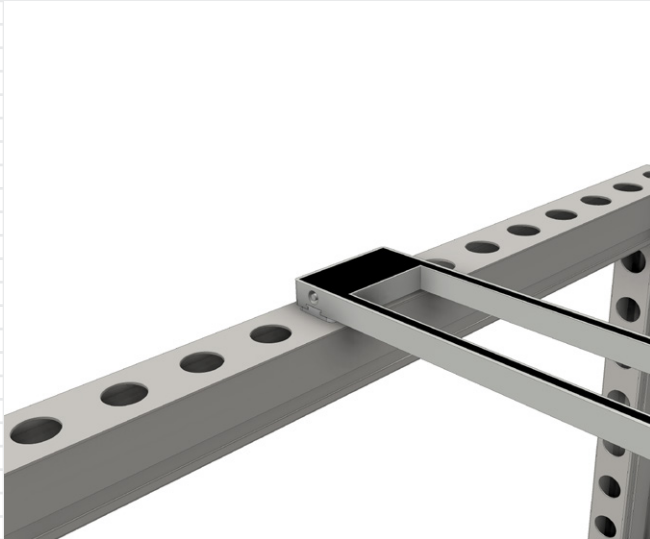
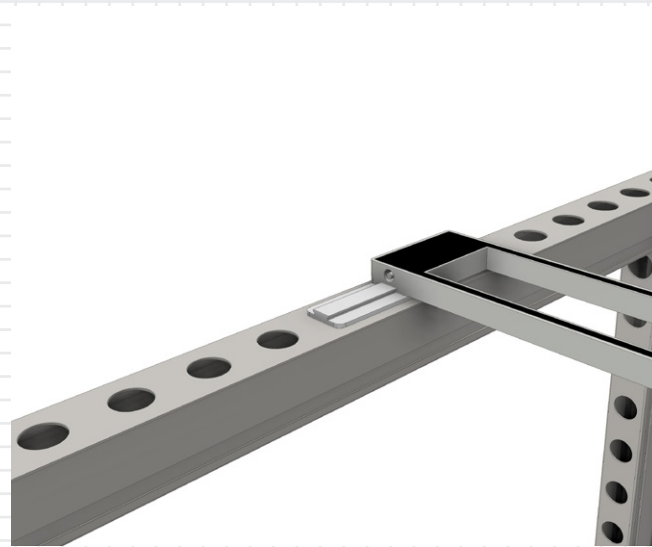
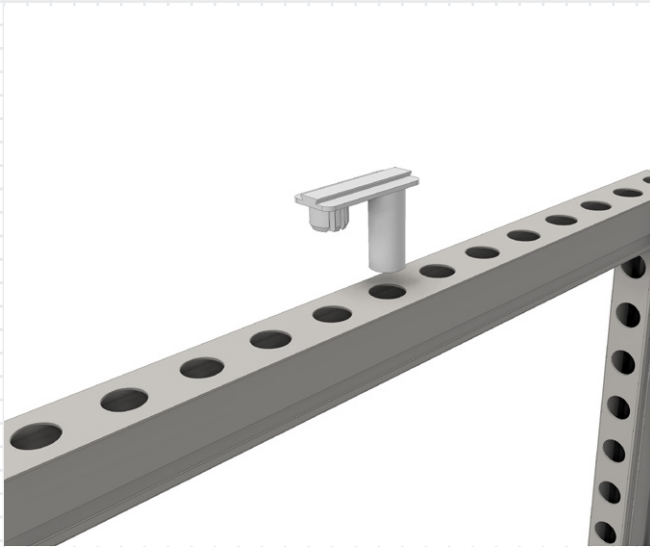
The SAM light comes with a handy switch, making it easy for you to select a cold (❄️) or warm (☀️) colour temperature.

# SAM Light

## Wiring

The connection and invisible wiring make it very easy to connect the fixtures to the frames, ensuring the panel or even the entire back wall is illuminated evenly, using just one power supply.

All beMatrix LED products can be wired with the same accessories.



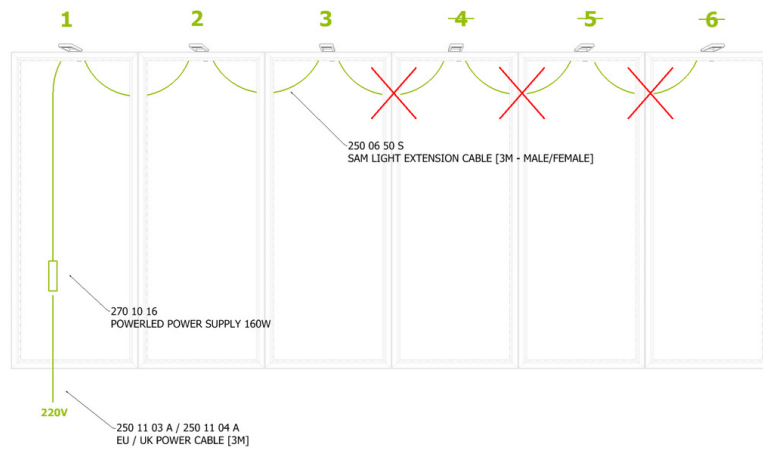
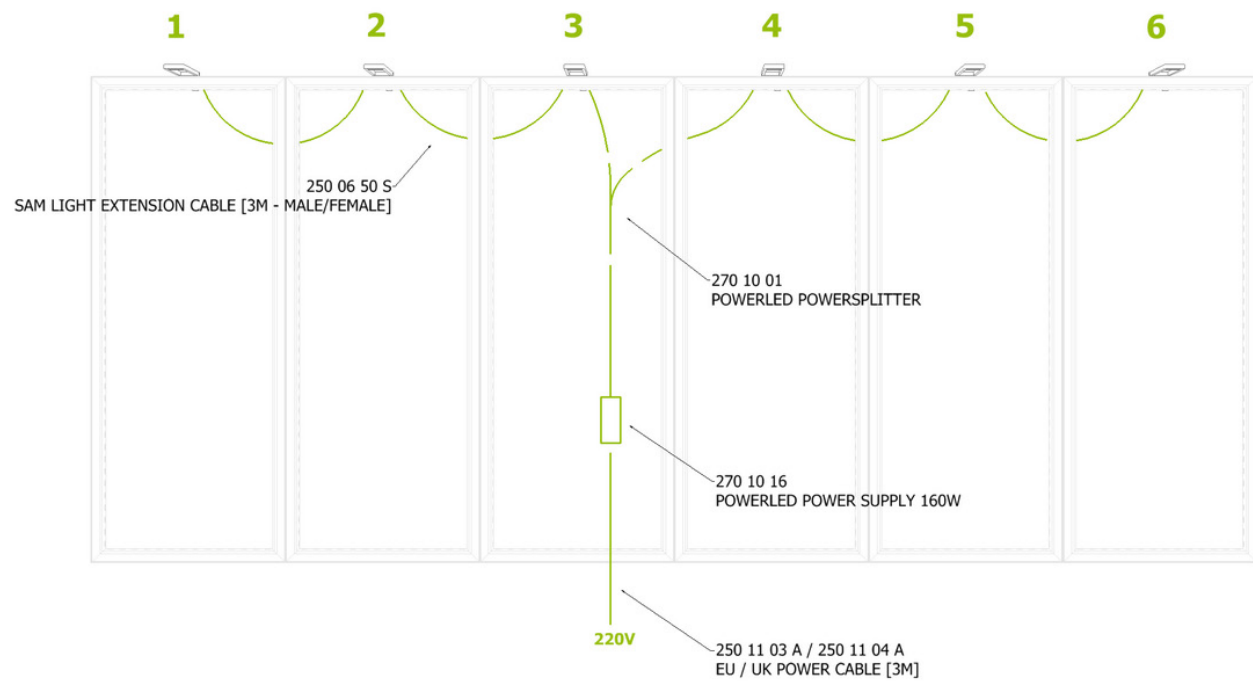
# SAM Light

Connecting:  
**1 power supply,  
6 lights**

Maximum 6 SAM lights per 160W power supply.

Build electrical circuits of maximum 3 SAM lights using the power splitter.

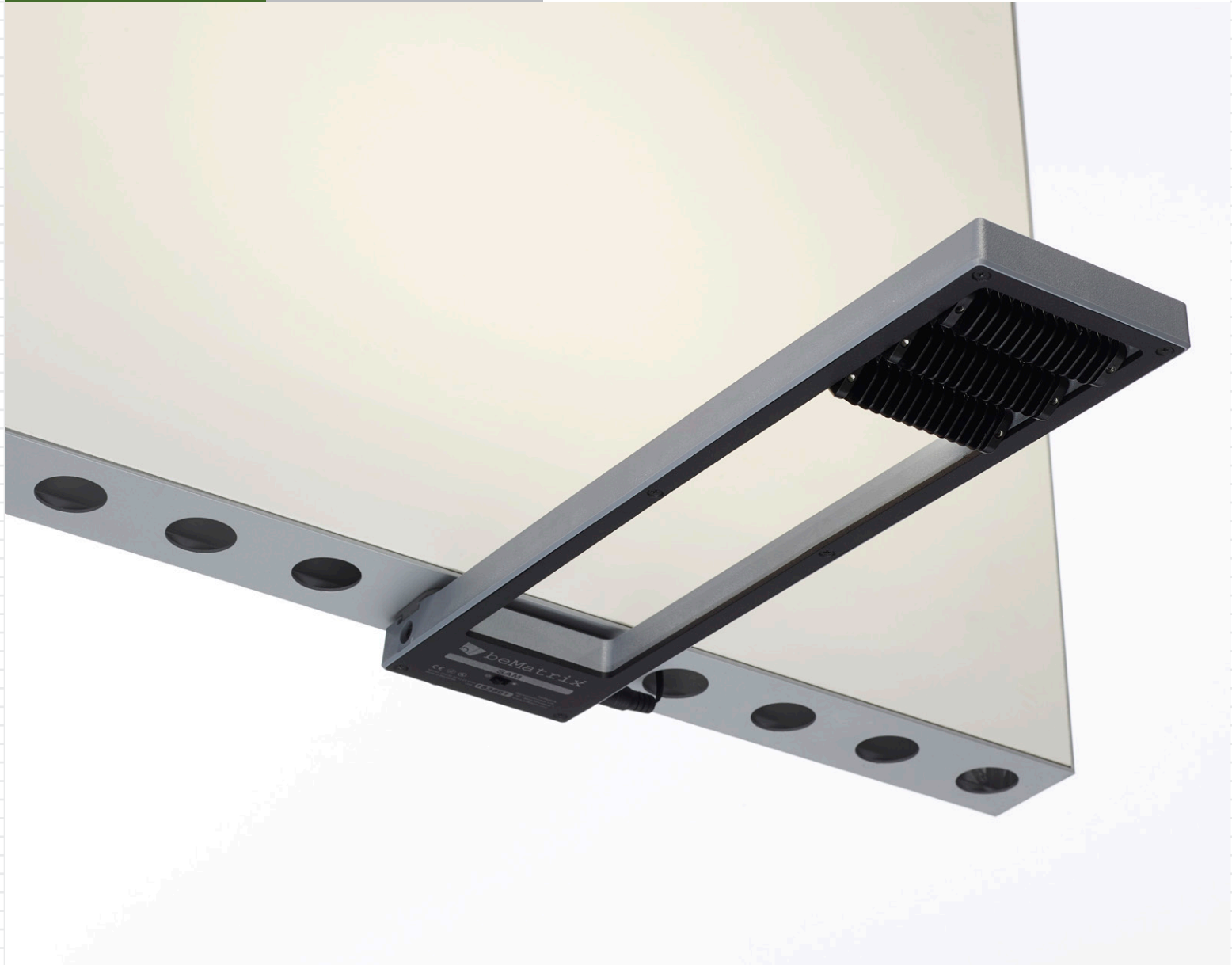
Never connect more than 3 SAM lights in a row!



# SAM Light

## Unique benefits

- The LED modules can be rotated 340°, lighting the surface in any desired angle, even upwards.
- A perfect match of stylish design and the efficiency of LED technology.



# SAM Light

## Compact storage

Thanks to the customized packaging for the SAM light (packed per 2 or per 6) and its accessories, the units are easy to store.



### **250 05 50 S 2X**

SET 2X SAM LIGHT WARM/COLD IN CARDBOARD BOX [INCL. 2X POWER SUPPLY (EU)]



### **250 05 50 S 6X**

SET 6X SAM LIGHT WARM/COLD IN FLIGHTCASE [INCL. ACCESSORIES]

# SAM Light

## Parts list

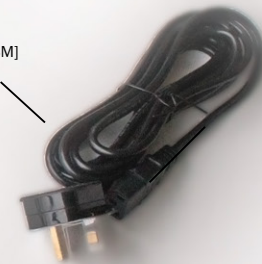
**250 05 50 S**  
SAM LIGHT [INCL POWER SUPPLY & EU POWER CABLE]



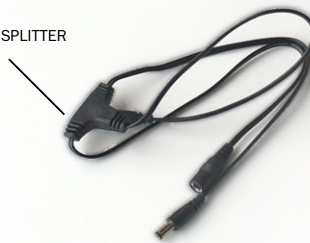
**250 11 03 A**  
EU POWER CABLE [3M]



**250 11 04 A**  
UK POWER CABLE [3M]



**270 10 01**  
POWERLED POWERSPLITTER



**250 10 02 PA**  
D30 CELIGHT/SAM  
CONNECTOR



**250 06 50 S**  
SAM LIGHT EXTENSION CABLE  
[3M - MALE/FEMALE]



**270 10 16**  
POWERLED POWER SUPPLY  
160W





# SAM Light

## References



© Optimum Concept (BE)



© Leseno (SI)



© Faust Dyrbye (DK)

**beMatrix**<sup>®</sup>  
re!nventing stand building systems

**beMatrix head-office Belgium**  
*Industriezone Beveren-Noord 6  
Wijnendalestraat 174  
B - 8800 Roeselare  
T. +32 51 20 07 50  
[www.beMatrix.com](http://www.beMatrix.com)*